

HOUSE & LAND PACKAGE

Lot 7, Village Centre

\$522,775*



Portland Series 3

BY HUME BUILDING



4



2



2

With large open plan kitchen and family room that spills out to the ground floor alfresco area you will be able to entertain or relax in perfect surrounds. The separate front lounge and upstairs rumpus

room provide alternate living spaces.while the private terrace off the master bedroom is the perfect area for the parents to relax.

Home and Land Package Inclusions:

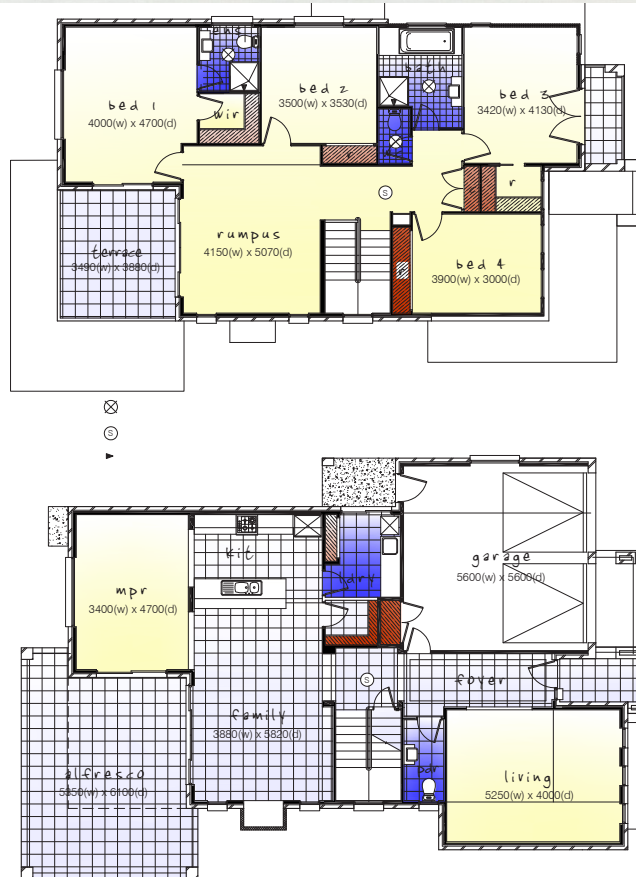
- 574m2 homesite, lot 7 Village Centre
- Large alfresco area for indoor/ outdoor living
- Three separate living areas including rumpus room, living room and family room
- Ensuite and walk-in wardrobe to master bedroom
- Walk-in wardrobe and balcony to bedroom 3
- Internal access to garage
- Stunning façade
- 2.7m ceilings
- Walk-in pantry
- Colorbond® skillion roof
- Double garage with internal access
- Gas-flued fireplace
- Skillion Facade

Portland Series 3

BY HUME BUILDING

Lot 7, Village Centre

\$522,775*



Details:

- HOME SIZE: -
- LAND SIZE: 574sqm
- BEDROOMS: 4
- BATHROOMS: 2
- GARAGE: 2

* Prices correct as at January 2011. Prices are subject to builder terms and conditions. House prices are subject to change without notice and should be confirmed with the Builders. Artist illustrations depicting exterior facades are meant as a guide only. Some exclusions may apply. For terms and conditions refer Sales and Information Centre and Builder Offices.