

# HOUSE & LAND PACKAGE

Lot 134, Pembroke

\$557,360\*



## CLAREMONT 27

BY HAMPSHIRE HOMES



4



2.5



2

This spacious single storey home boasts a delightful open-plan living arrangement with an optional alfresco area. Including 4 bedrooms, there will be ample room for the family and being located in the Pembroke Village, you will be close to the new

### Home and Land Package Inclusions:

- Open-plan living with generous family area overlooking optional alfresco
- Separate lounge room
- Walk-in wardrobe and ensuite to master bedroom
- Driveway allowance
- Telstra Velocity® Smart Wiring™ provision
- 450mm eaves
- Gas-flued fireplace
- Gas-boosted solar hot water system

primary school opening Term 2.

Situated on a 1,039sqm lot, there will be no shortage of space to entertain outdoors and for the children to run about and play.

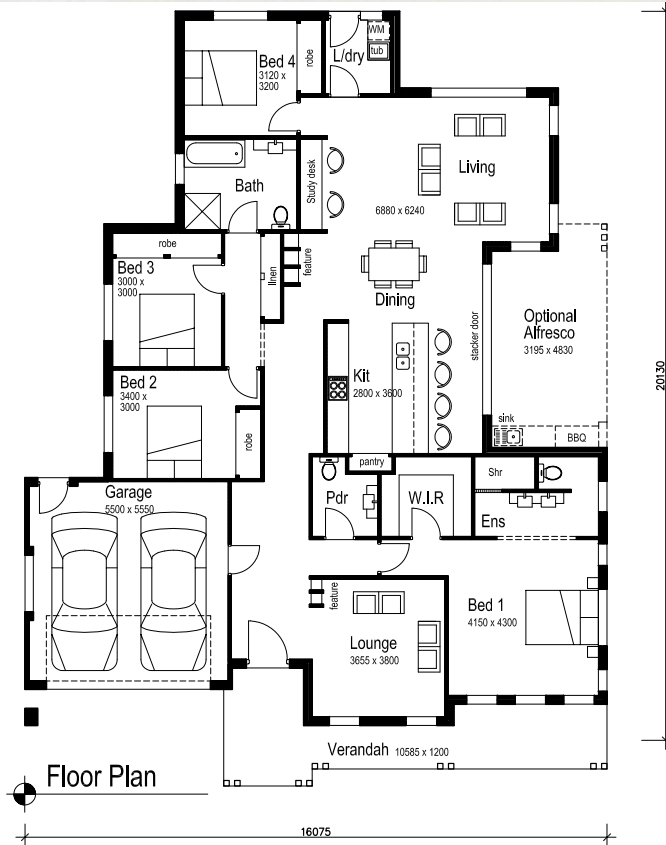
- 2.7m ceiling
- 25 degree roof pitch
- Slimline roof tiles
- Carpet to bedrooms and tiles to main floor (builder's selection)
- 1,039sqm homesite, lot 134 Pembroke

# Claremont 27

BY HAMPSHIRE HOMES

Lot 134, Pembroke

\$557,360\*



## Details:

HOME SIZE: 268.44sqm

LAND SIZE: 1,039sqm

BEDROOMS: 4

BATHROOMS: 2.5

GARAGE: 2

\* Prices correct as at January 2020. Prices are subject to change without notice and should be confirmed with the Builders. Artist illustrations depicting exterior facades are meant as a guide only. Some exclusions may apply. For terms and conditions refer Sales and Information Centre and Builder Offices.